

Mac Data Downloader Tutorial

Chapter 1 - Requirements	1
Chapter 2 - Installation	1
Chapter 3 - Download Database	2
Chapter 4 - Troubleshooting	4

Mac Data Downloader allows Mac users to download the database for Asellertool's PDA Scouting software to an SD card.

Chapter 1 - Requirements

1.1 The Asellertool software running on the PDA should be version 9.5 or above. You can install the latest Asellertool software using the links below, by placing them on your SD card, and running them on the PDA.

New Installation: <http://www.asellertool.com/release/autorun.zip>

Instructions: http://www.asellertool.com/doc/PDA_90_Install.pdf

Upgrade Installation: <http://www.asellertool.com/release/ppc.cab>

Instructions: http://www.asellertool.com/doc/Upgrade_90_tutorial.pdf

1.2 Your Mac OS needs to be 10.6 (Snow Leopard) or higher.

1.3 Make sure the Asellertool scouting software is installed on the PDA with the correct user ID and password entered. If you have a new SD card, insert the SD card into the PDA and do a soft reset to initialize the card with the PDA's information.

Chapter 2 - Installation

Download <http://www.asellertool.com/release/MacDataDownloader.zip> with Safari. Safari will automatically unzip the file.

To install the program:

Step 1: Open a Finder Window, click on your Home folder (For example the home folder in our Mac is named 'asellertool', as shown in Figure 1).

Step 2: Click the 'Downloads' folder.

Step 3: Drag Mac Data Downloader to the desktop folder (A). The Mac Data Downloader will show up on the desktop screen (Figure 2).

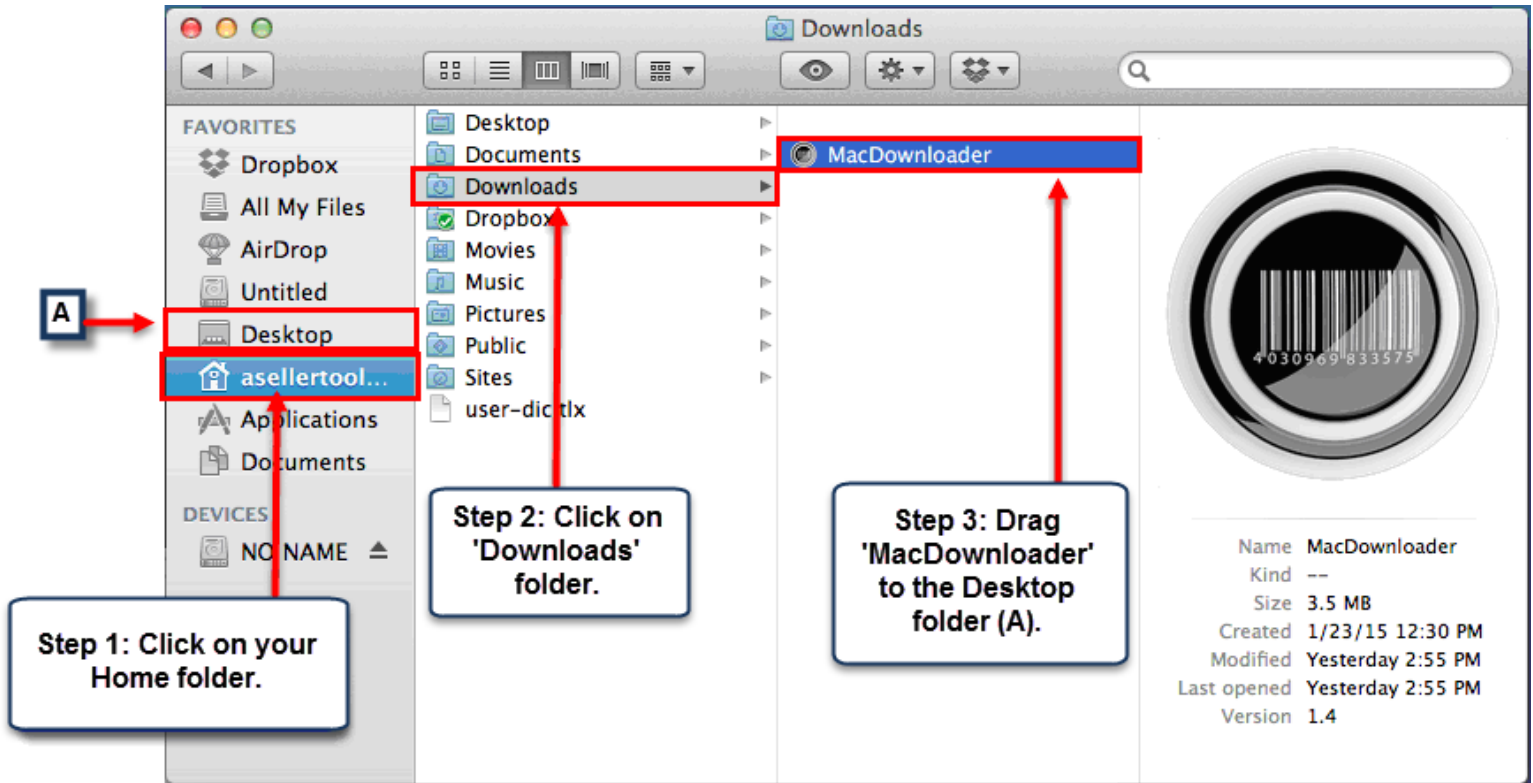


Figure 1

Chapter 3 - Download Database

If you have a new SD card or change to a new PDA, make sure our software is installed on the PDA and the correct user ID and password have been entered into the software, then do a soft reset to initialize the SD card with the PDA's information.

Step 1: Insert the SD card into the Mac, then double-click the Mac Data Downloader icon on your desktop:

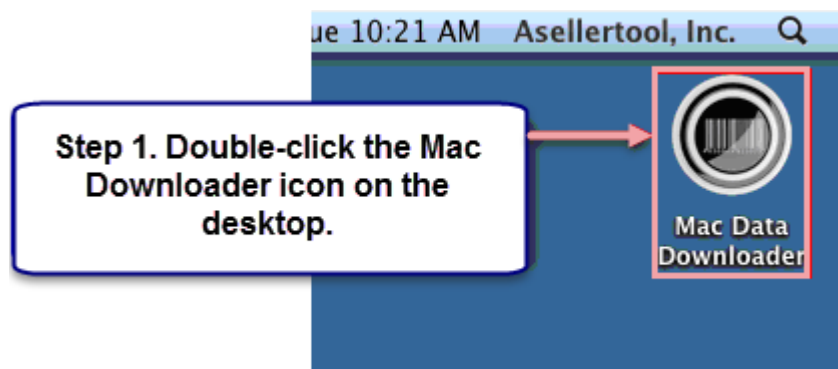


Figure 2

Step 2: Click 'Start' to download the database (Figure 3).

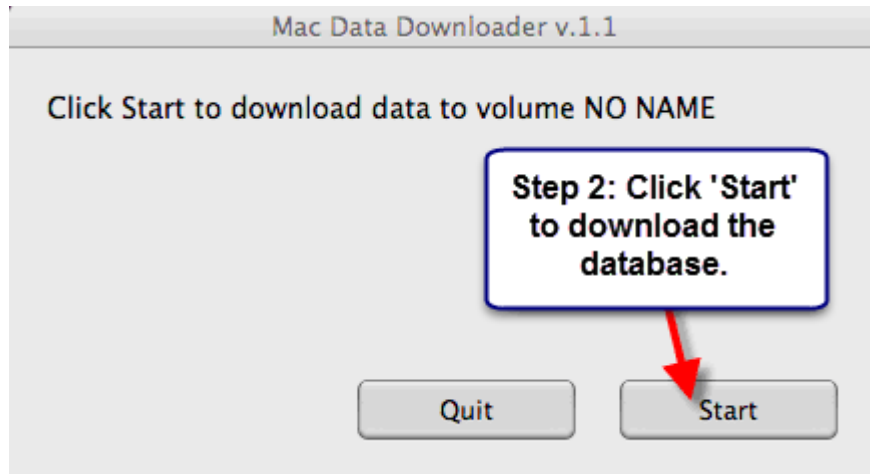


Figure 3

Step 3: When you see the message in Figure 4, click 'Done'.

Soft reset your PDA, then click the 'eject' icon (Figure 5). Remove the card from the Mac and place it back in the PDA. Make sure to scan some familiar items to verify the data is correct.

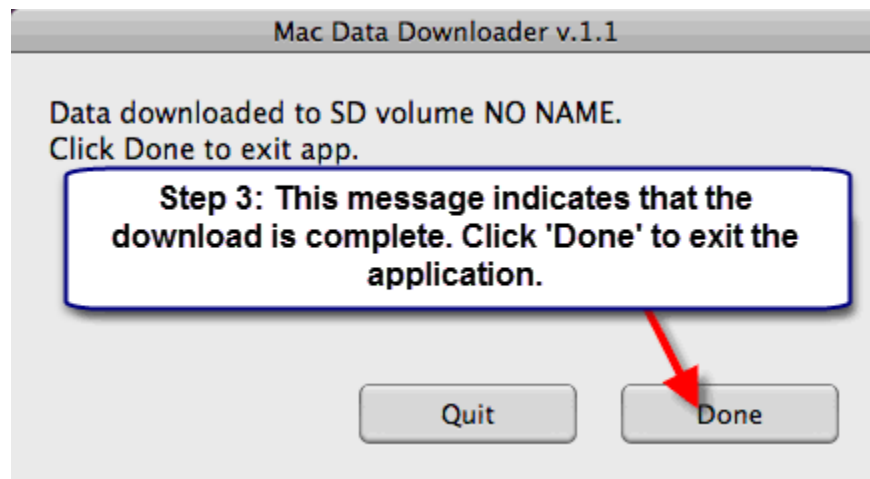


Figure 4

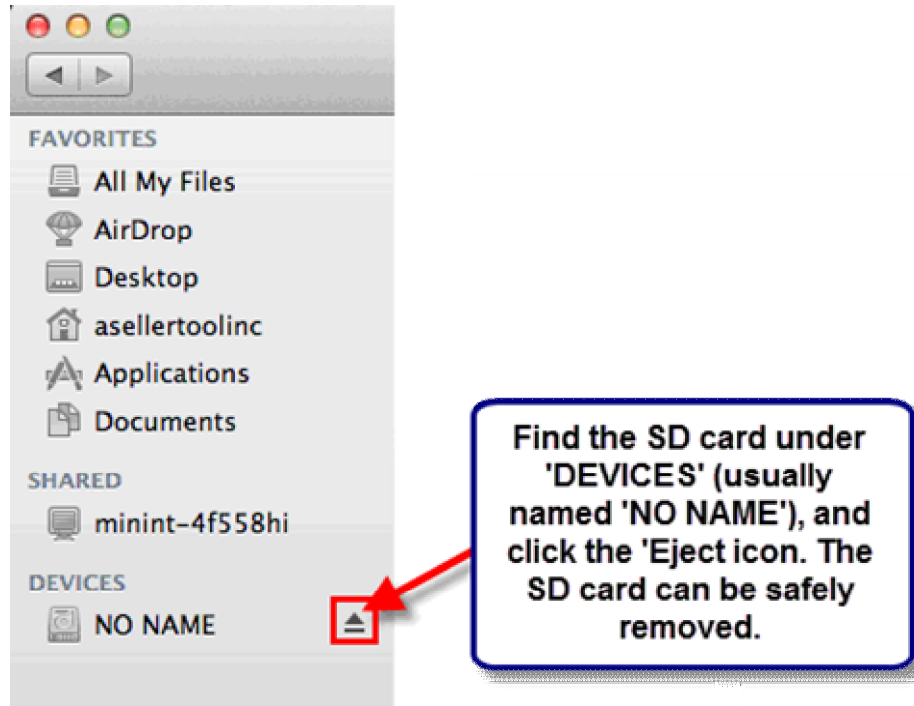


Figure 5

Chapter 4 - Troubleshooting

4.1 Error: Please go to “License” Menu to input correct username and password

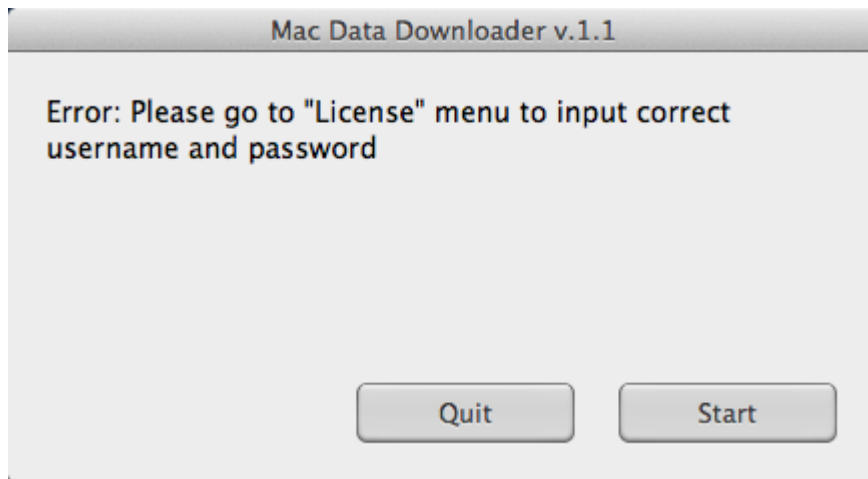


Figure 6

Solution: Insert the SD card into the PDA and go to the Asellertool program. Tap ‘Menu’ on the bottom left, then tap ‘Account’. Verify your user info is correct, and then tap “Save” and do a soft reset. Then try the download again. If the error message returns, contact us at <http://www.asellertool.com/contact.html>.

4.2 No SD with license file found.

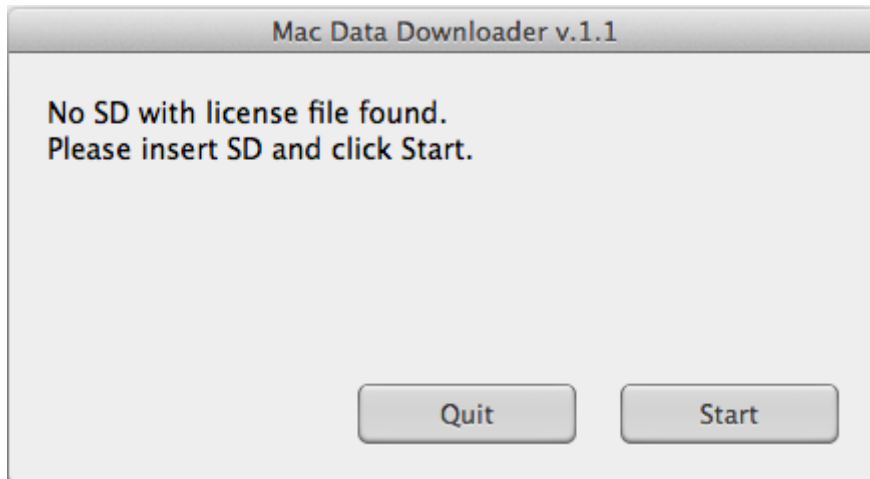


Figure 7

Solution: Check your PDA to make sure our program is version 9.5 or above. If it is not, check Section 1.1 to upgrade the PDA.

If your PDA software is the correct version, follow the solution in Section 4.1.

4.3 Error: You have switched from this device in the past. Please contact us.

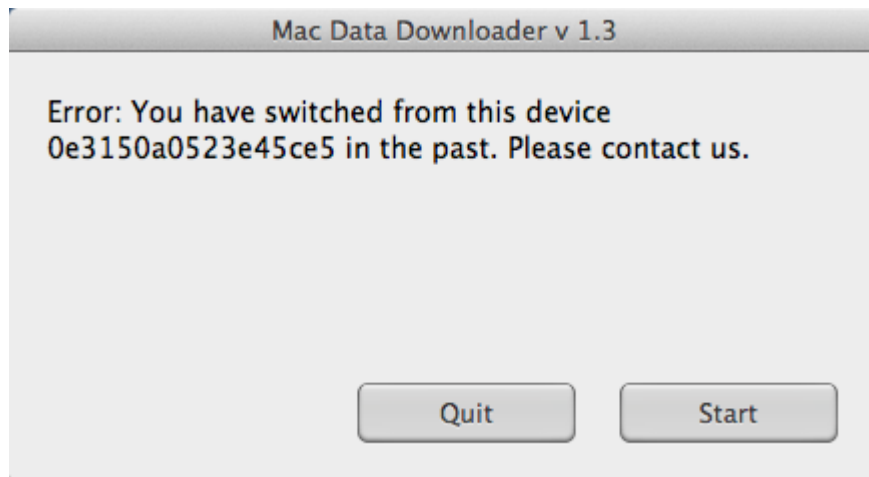


Figure 8

Solution: The SD card contains information from your old PDA. Insert the SD card into the current PDA, and do a soft reset to initialize the card with the current PDA's information.